

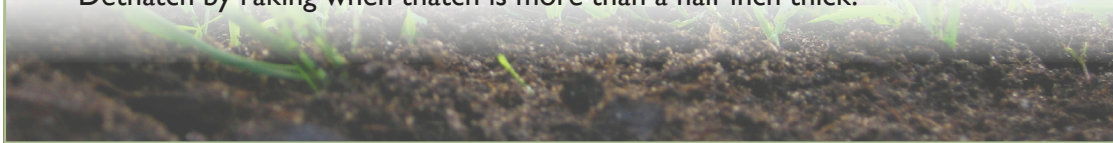


LOVE YOUR LAWN WITHOUT PESTICIDES

Forget the Weed n Feed. Follow These Steps Instead!

1 HEALTHY SOIL

- Test your soil. pH should be 6.5-7.0 Add pelletized lime if pH is lower than this.
- Aerate to allow soil, air and nutrients to reach roots. Topdress with compost (1/4"-1", raked over the lawn in fall).
- Fertilize with slow-release or organic fertilizer. Organic fertilizers support soil microorganisms that help your grass thrive.
- Dethatch by raking when thatch is more than a half-inch thick.



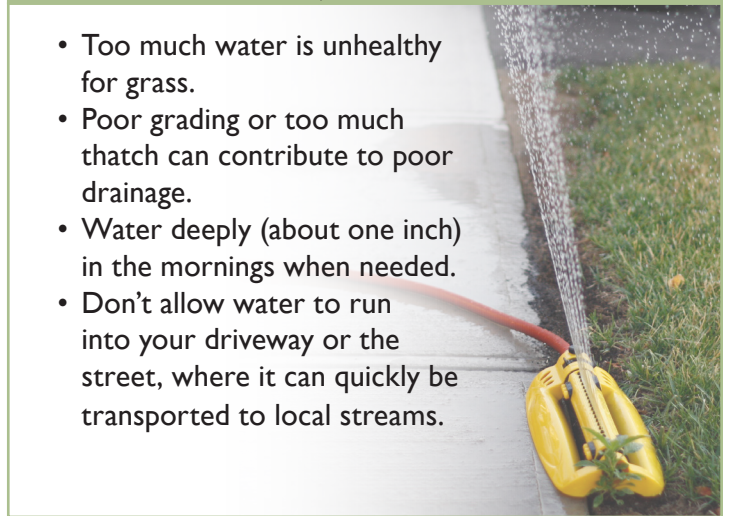
2 CHOOSE THE RIGHT SEED

- Buy seed to match your light (shade or sun).
- Overseed bare spots in spring and fall, after any dethatching and composting. Lightly cover over-seeded areas with straw till grass germinates.
- Seeds containing endophytes (check labels) protect against some insects, fungus, and drought.
- Try a seed mix with Dutch white clover for a natural source of nitrogen and forage for bumblebees.



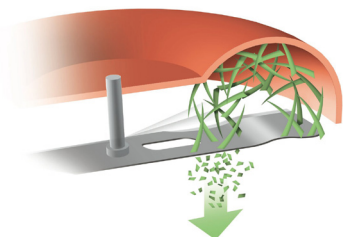
3 WATER JUST ENOUGH

- Too much water is unhealthy for grass.
- Poor grading or too much thatch can contribute to poor drainage.
- Water deeply (about one inch) in the mornings when needed.
- Don't allow water to run into your driveway or the street, where it can quickly be transported to local streams.



4 MOW HIGH AND OFTEN

- Cut grass to 3 inches (or highest setting). Take off only 1/3 of the grass height each time.
- Keep mower blades sharp.
- Leave the grass clippings - these add nitrogen and organic matter back to the soil. Mulching mowers create fine grass particles and can also be used with leaves in the fall.



5 WEED MANAGEMENT

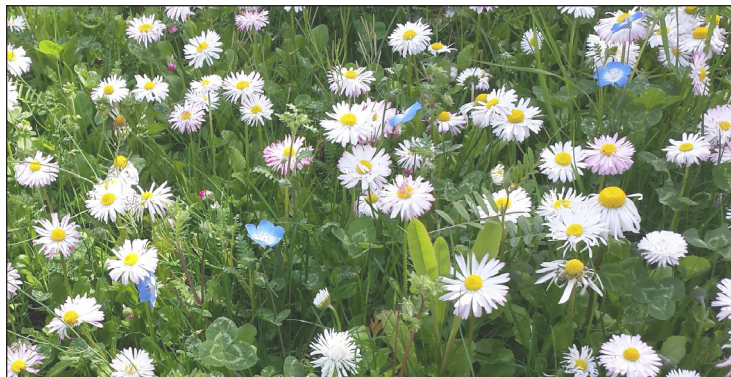
- Manually remove with weed poppers or twisters.
- Pour boiling water, cut off top growth at soil level or lightly spray weeds with concentrated vinegar on a sunny day. These methods will kill top growth so repeat as needed and seed bare areas in fall.
- Install sturdy edging or try flame-weeders to prevent spread of grass or weeds in unwanted areas.



Consider These Lawn Alternatives

ECO-LAWNS

Mingle flowers into your grass and you'll have the most stunning lawn in the neighborhood. Bees will love your lawn, too! Eco-lawns (also known as Eco-turf) require less mowing, watering, and fertilizing. Eco-lawn seed are available at small independent garden centers. Search for a mix that meets your needs. Nichols Garden Nursery (Albany, OR) and Protime Lawn Seed (Portland, OR) are recognized vendors of seed mixes adapted to the Northwest.



MEADOWSCAPES

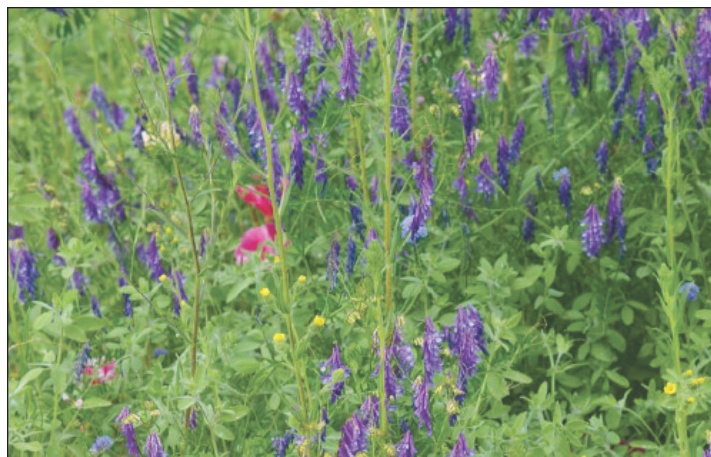


Photo: Mary Bushman, City of Portland, Bureau of Environmental Services

Oregon's Willamette Valley was dominated by grassy prairies prior to the arrival of Euro-Americans. Planting native meadow grasses and wildflowers helps conserve local pollinators, birds, and beneficial insects while allowing you to experiment with a wide palette of colors and structures. Native meadow species are also deep-rooted and drought-resistant. A wonderful guide to establishing urban meadows is available at the West Multnomah Soil and Water Conservation District website here: https://wmswcd.org/wp-content/uploads/2016/04/Meadowscaping_Publication_Complete_LR.2.pdf

RAIN GARDENS

In nature, runoff is filtered through soil and wetlands before entering streams and rivers. Rain gardens mimic that system by funneling runoff from rooftops, yards and streets through low-lying spaces in the landscape planted with plants adapted to wetter soils, like sedges. Beautiful, functional and very hip, you can create your rain garden with help from The Oregon Rain Garden Guide at: bit.ly/raingardens.



A curb bump-out and rain garden in Portland, OR. Photo: DC Green Infrastructure

This fact sheet supported through Clackamas County Water Environment Services.

NCAP works to protect community and environmental health and inspire the use of ecologically sound solutions to reduce the use of pesticides.

WWW.PESTICIDE.ORG / INFO@PESTICIDE.ORG