

WeedWise tips to target tansy ragwort

☉ *Know your invader.* Familiarize yourself with the identification, life cycle, and management of tansy ragwort.

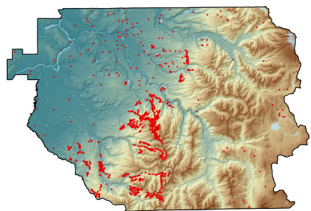
☉ *Inspect your property.* Monitor areas around your property, particularly along roadsides and in pastures and hay fields where they may threaten livestock.

☉ *Control tansy ragwort before it can become a problem.* Control tansy ragwort when infestations are small and manageable to reduce the time and expense needed to eradicate them.

☉ *Know when to seek help.* Some weeds may require particular methods or techniques for eradication to be successful. Contact the **WeedWise** program for additional information about a particular weed or management practice.

☉ *Don't spread tansy ragwort.* Don't compost plants once they have set seed. Dispose of seeds and flowering plants in the trash, or burned on site.

☉ *Be patient and diligent.* Understand that controlling and preventing the reinfestation of tansy ragwort is a long term process.



Tansy ragwort locations in Clackamas County

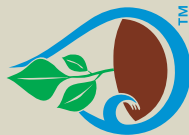
The red dots depict the reported tansy ragwort locations in Clackamas County.



The Clackamas County Soil and Water Conservation District (CCSWCD) prohibits discrimination in all of its programs and activities on the basis of race, color, national origin, age, disability, sex, marital status, familial status, religion, sexual orientation, genetic information and political beliefs. CCSWCD is an equal opportunity provider and employer.

This brochure was printed using soy ink and recycled paper.

CLACKAMAS COUNTY SOIL AND WATER
**CONSERVATION
DISTRICT**
221 Molalla Avenue, Suite 102
Oregon City, OR 97045
503.210.6000
www.conservationsdistrict.org



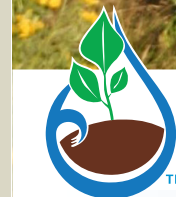
Cinnabar moth caterpillar
Tyria jacobaeae

Samuel Leininger, Clackamas SWCD

Tansy Ragwort



Management



CLACKAMAS COUNTY SOIL AND WATER
CONSERVATION DISTRICT
www.conservationsdistrict.org

Good dirt. Clean water.

Eric Coombs, Clackamas Conservation District, Ragwort.org

Tansy Ragwort



Above: A large tansy ragwort infestation



Clockwise from upper left: Tansy ragwort rosette in spring, bright yellow flowers of tansy ragwort, adult tansy ragwort plant, tansy ragwort plant setting seed.



What is tansy ragwort?

Tansy ragwort (*Senecio jacobaea*) is a biennial noxious weed that invades pastures, fields and roadsides across our region. Tansy ragwort is a member of the sunflower family and was first introduced into Oregon in 1922.

What does it look like?

Tansy ragwort seedlings emerge during the rainy season and develop into rosettes of wavy dandelion-like leaves. The following season, rosettes develop flowering stalks with abundant bright yellow flowers. Adult tansy ragwort plants grow 1-4 feet in height at maturity and form dense patches, particularly in areas with frequent and repeated disturbance.

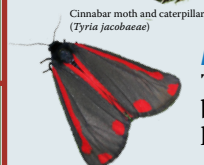
Why should I worry about tansy ragwort?

Tansy ragwort is a toxic plant to livestock. Sheep exhibit resistance to tansy ragwort poisoning, but ingestion of tansy ragwort by other livestock can cause irreversible liver damage. As such, tansy ragwort is a concern in pastures and hay fields. In natural areas, tansy ragwort also displaces native vegetation needed by wildlife for food and shelter.

How does tansy ragwort spread?

In our area, tansy ragwort spreads primarily by seed. The lightweight dandelion-like seeds are easily dispersed with wind. Seed can disperse distances up to fifty feet from parent plants.

Target control of tansy ragwort in late fall through spring. Treat plants after seedlings have emerged and before rosettes have bolted.



Cinnabar moth and caterpillar
(*Tyria jacobaea*)

BIOCONTROL BUGS THAT FIND TANSY TASTY!

There are three biological controls working throughout the year to help you control tansy ragwort, but they can't take care of everything, so take the initiative to control tansy ragwort when it threatens livestock. Keep an eye out for these biocontrols in your area.



Flea beetle
(*Longitarsus jacobaeae*)

Seed head fly
(*Botanophila seneciella*)

Eric Coombs, Oregon Department of Agriculture, Bugwood.org

Samuel Leung, Clackamas SWCD



Clackamas SWCD WeedWise Program
www.conservationdistrict.org • 503-210-6000
221 Molalla Avenue, Suite 102
Oregon City, OR 97045