

Clackamas SWCD

Conservation Resource Center Plaza and Landscaping Improvements



CLACKAMAS SOIL AND WATER
**CONSERVATION
DISTRICT**
Good dirt. Clean water.

Final Questions and Answers – Set 2 August 2, 2024

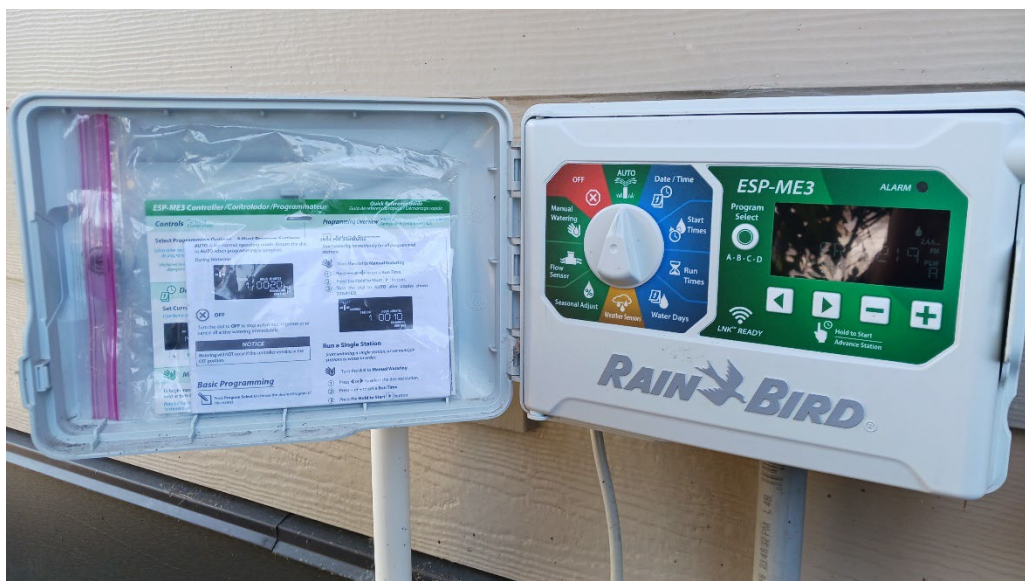
Typically, the irrigation and controls system would be installed by a landscape contractor, not the electrical contractor. It appears now that the Clackamas SWCD is saying carry a budget of \$18,000.00 for all the electrical. Does this include the irrigation component of the job (irrigation controller, underground wiring for new controls, etc.) or is it strictly the electrical for the lights and plugs at the canopy and the bubbler fountains?

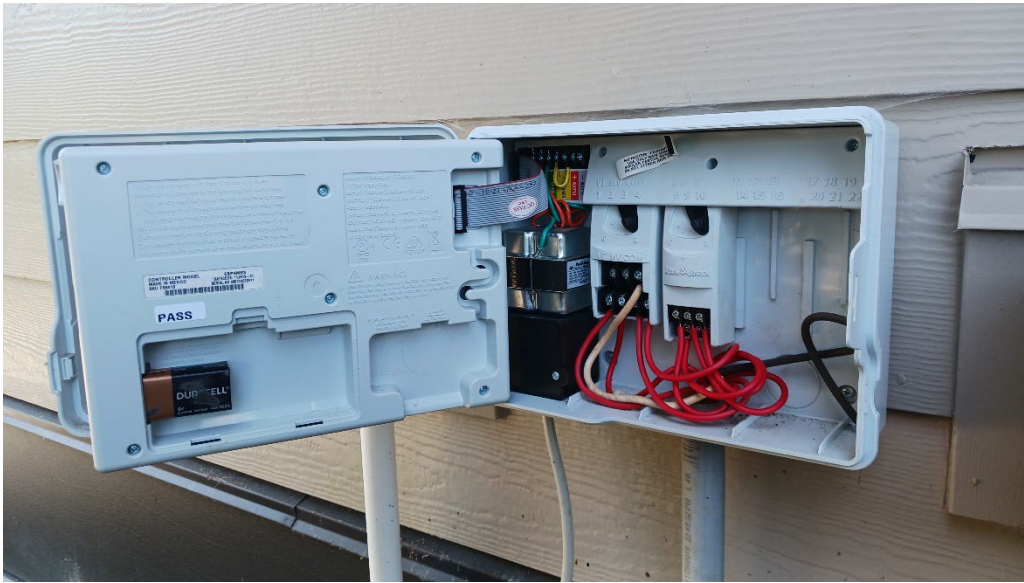
Any electrical costs pertaining to the irrigation system should be excluded from the \$18,000 electrical allowance and instead be included in Total Cost column of Item 1: “Full Project Cost Except Allowance Items” on “Attachment E: Base Bid Worksheet” provided in Addendum 2.

We have an existing irrigation controller that is already powered and operational (see photos below). The model number of the irrigation system controller was provided in Addendum 1 and we have also provided details on the existing irrigation system as items H and I in our downloads section on our project web page: <https://conservationdistrict.org/2024/invitation-to-bid-plaza-and-landscaping-improvements.html>

It is our desire that the existing system be used if it is sufficient to meet the project scope, significantly simplifying the electrical scope of the irrigation system. These irrigation electrical costs should not be included in the \$18,000 electrical allowance.

If bidding contractors feel the existing irrigation system or controller are not sufficient to meet the Scope of Work requirements, that information should be provided in their proposal’s project approach and the associated cost to meet the project scope should be included in Total Cost column of Item 1: “Full Project Cost Except Allowance Items” on “Attachment E: Base Bid Worksheet” provided in Addendum 2





Photos 1 & 2 - Existing Irrigation Controller Interface (1) and Interior Components (2)

For the steel edging which is preferred - Pickled and Oiled Steel (raw, no mill scale) or Hot Rolled steel (has mill scale and the other part is bright, ground steel)?

For the purpose of providing a bid for this project, please use the least expensive option.

For the excavation of things like the landscape logs, boulders, gravel path, and plaza planters – is the intent to stockpile that material somewhere onsite or haul offsite?

For the purpose of providing a bid for this project, contractors should assume this material will be hauled offsite and the associated cost, if any, should be included in the Base Bid amount.

Will there be skid-steer access to the plaza for bringing in materials?

Contractors interested in bidding on this project should arrange a site visit to determine equipment access to the plaza. Site showings are by appointment only. Please contact Jason Faucera at jfaucera@conservationdistrict.org or (503) 210-6013 to arrange an alternate showing. If you show up at the office without an appointment, you will be asked to come back after making an appointment. Site visits are only allowed during regular office hours, M-F 8am – 4:30pm.

We are interested in bidding as a subcontractor on the Unit Paver scope for this project. Specifically, we would include labor and material for placement of the 1” thick sand setting bed and unit pavers. Do you have the names of any Prime Contractors bidding?

Prime contractors looking for subcontractors to provide bids can contact Jason Faucera at jfaucera@conservationdistrict.org or (503) 210-6013 and I will share a list of interested subcontractors. Our site visit notes lists attendees present during the July 24 site walk, but may not include all prospective prime contractors. CSWCD does not know what contractors will submit proposals until bids are opened August 8 at 4pm.

The Clackamas Soil and Water Conservation District prohibits discrimination against its customers, employees, and applicants for employment on the basis of race, color, national origin, age, disability, sex, gender identity, religion, reprisal, and where applicable, political beliefs, marital status, familial or parental status, sexual orientation, or all or part of an individual's income is derived from any public assistance program, or protected genetic information in employment or in any program or activity conducted or funded by the District. The District is an equal opportunity employer.